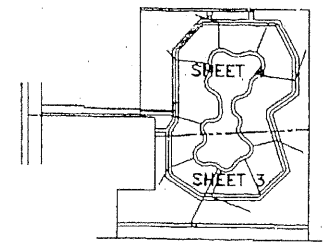
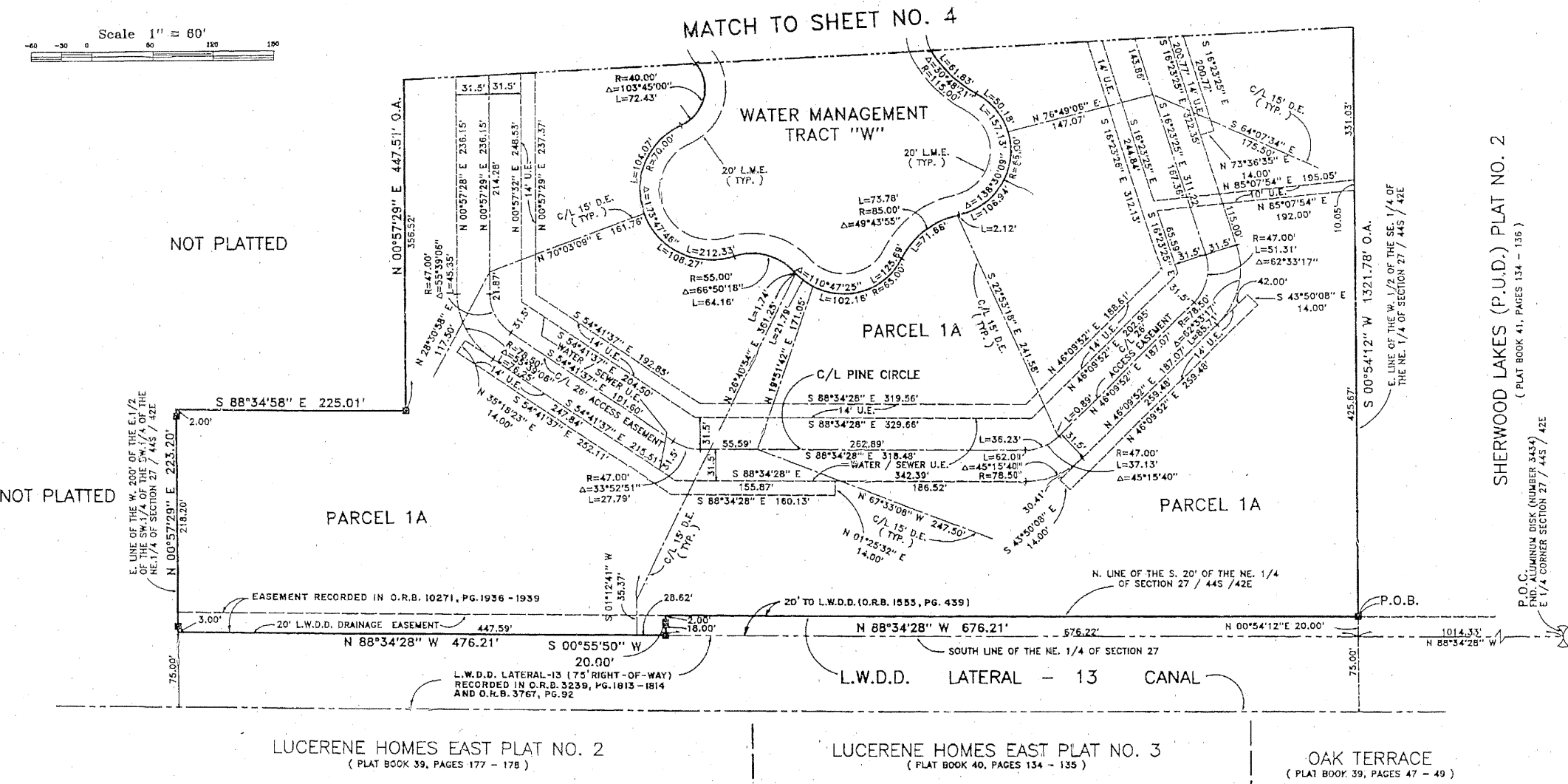
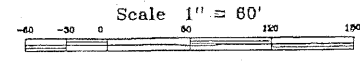


PLAT OF  
**CHELSEA COMMONS**  
LYING IN SECTION 27, TOWNSHIP 44 SOUTH, RANGE 42 EAST,  
CITY OF GREENACRES, PALM BEACH COUNTY, FLORIDA.  
SHEET 3 OF 4  
FEBRUARY, 1998



STATE OF FLORIDA  
COUNTY OF PALM BEACH  
This Plat was filed for record at \_\_\_\_\_  
M, This day of \_\_\_\_\_, 19\_\_\_\_  
and duly recorded in Plat Book No. \_\_\_\_\_  
on Page \_\_\_\_\_  
Dorothy H. Wilken, Clerk of the Circuit Court  
By \_\_\_\_\_ D.C.

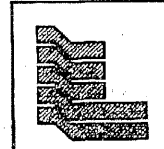


SHERWOOD LAKES (P.U.D.) PLAT NO. 2  
(PLAT BOOK 41, PAGES 134 - 135)  
P.D.C.  
END ALUMINUM DISK (NUMBER 3434)  
E 1/4 CORNER SECTION 27 / 44S / 42E

LUCERNE HOMES EAST PLAT NO. 2  
(PLAT BOOK 39, PAGES 177 - 178)

LUCERNE HOMES EAST PLAT NO. 3  
(PLAT BOOK 40, PAGES 134 - 135)

OAK TERRACE  
(PLAT BOOK 39, PAGES 47 - 49)



Landmark Surveying & Mapping Inc.  
1850 FOREST HILL BOULEVARD  
PH. (561)433-5405 SUITE 100 W.P.B. FLORIDA

PLAT OF  
**CHELSEA COMMONS**